

Study Desk Build Guide

Item Description	Link	Qty	Unit Price	Total
Support Crossbeam 2x3 x 8ft (2.43m)	https://www.homedepot.com/p/2-in-x-3-in-x-8-ft-Southern-Yellow-Pine-Framing-Stud-81960/316812165	4	\$3.15	\$12.60
¾" (18mm) A or B grade Plywood, 4x8ft	Not-Fancy: https://www.homedepot.com/p/18mm-Sand-e-Plywood-3-4-in-Category-x-4-ft-x-8-ft-Actual-0-709-in-x-48-in-x-96-in-454559/203414066 Fancy: https://www.homedepot.com/p/Columbia-Forest-Products-3-4-in-x-2-ft-x-8-ft-Europly-Walnut-Plywood-Project-Panel-Free-Custom-Cut-Available-3790/207004226	3	\$59.88 Or \$111 fancy	\$179.64 Or \$281 fancy
L bracket brace	https://www.homedepot.com/p/Onward-20-in-White-Heavy-Duty-Shelf-Bracket-494W20B/202205511	2	10.58	\$21.16
TOTALS				\$213.40 Or \$314.76 fancy

220 grit sand paper, 320 too

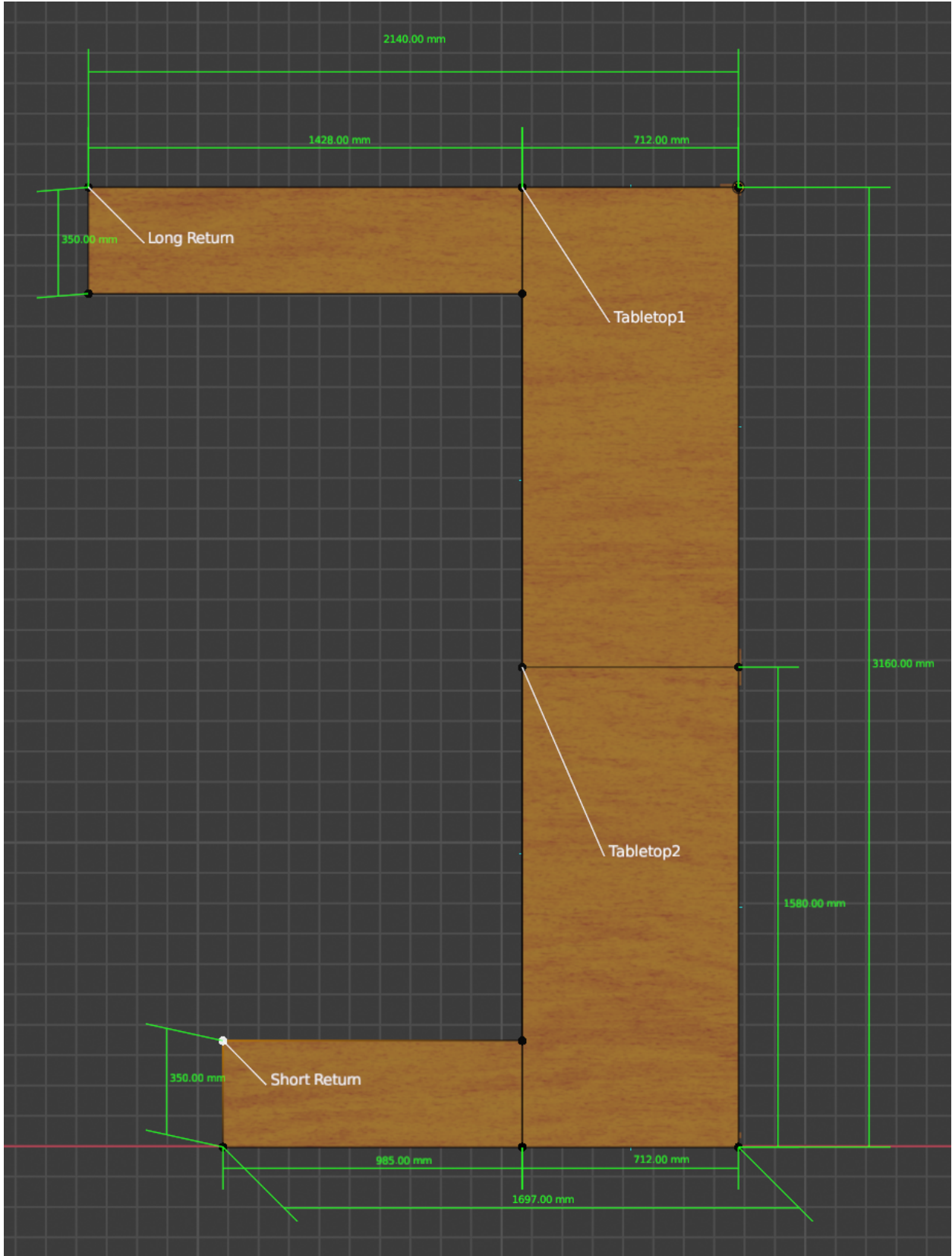
Natural bristle paint brush

<https://www.hunker.com/12586140/how-to-high-gloss-plywood>

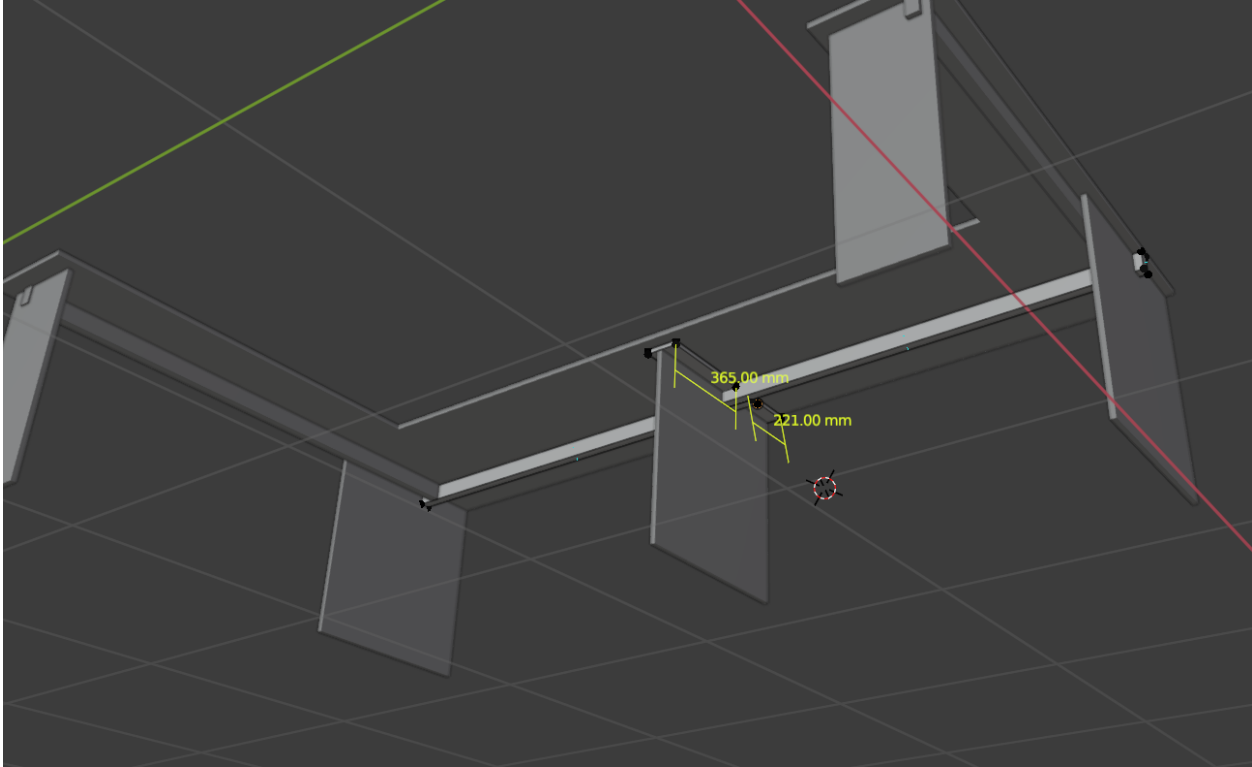
polyurethane

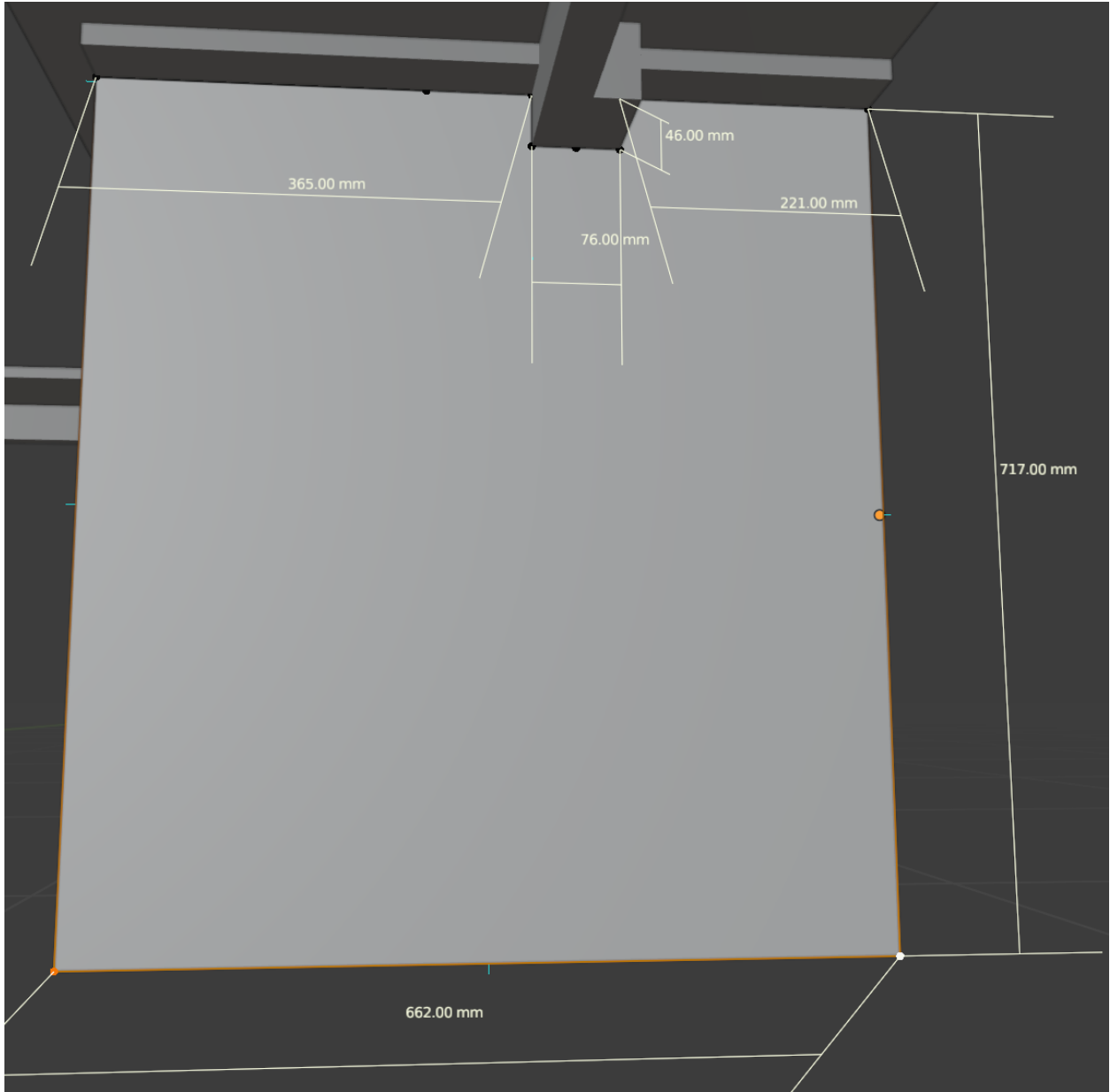
Technical Drawings

Tabletop



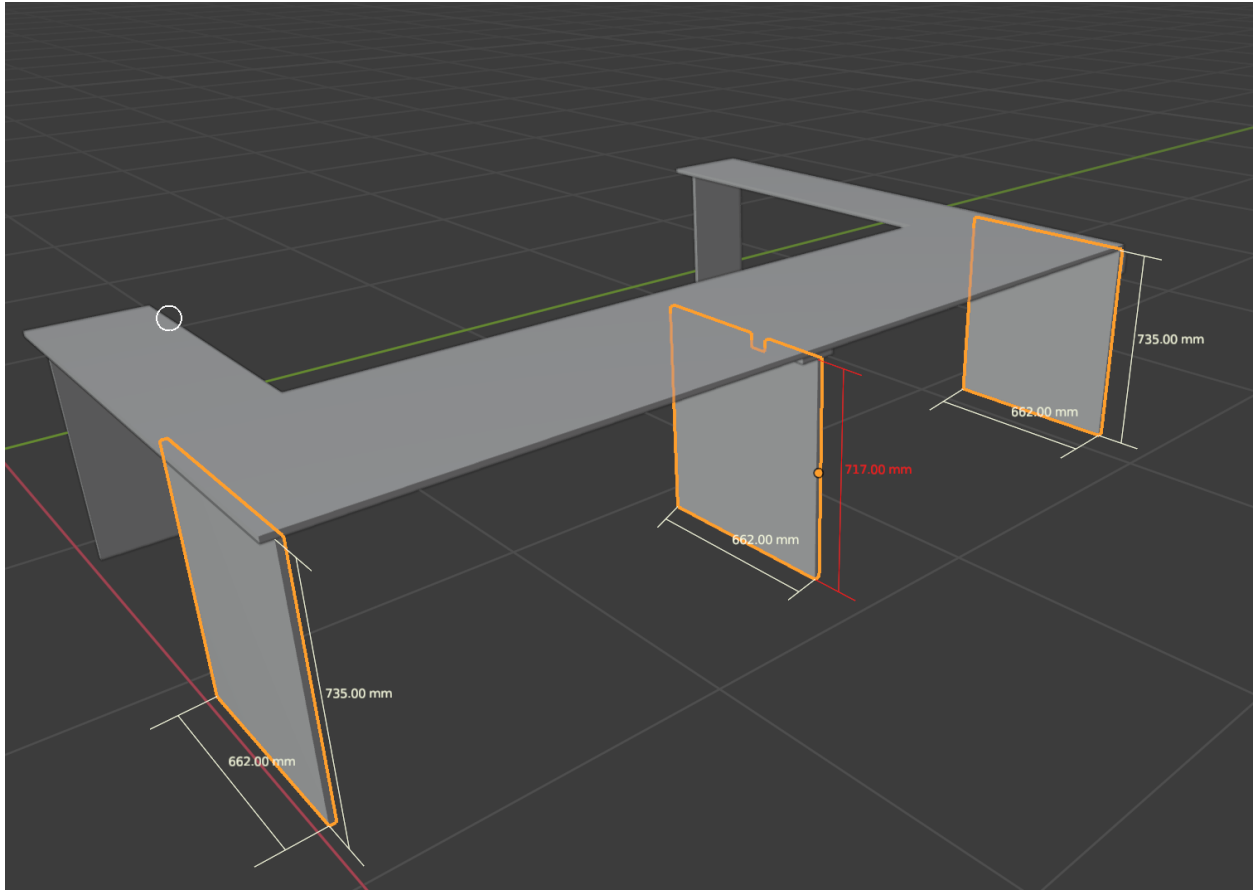
Support Middle (Pannel F)



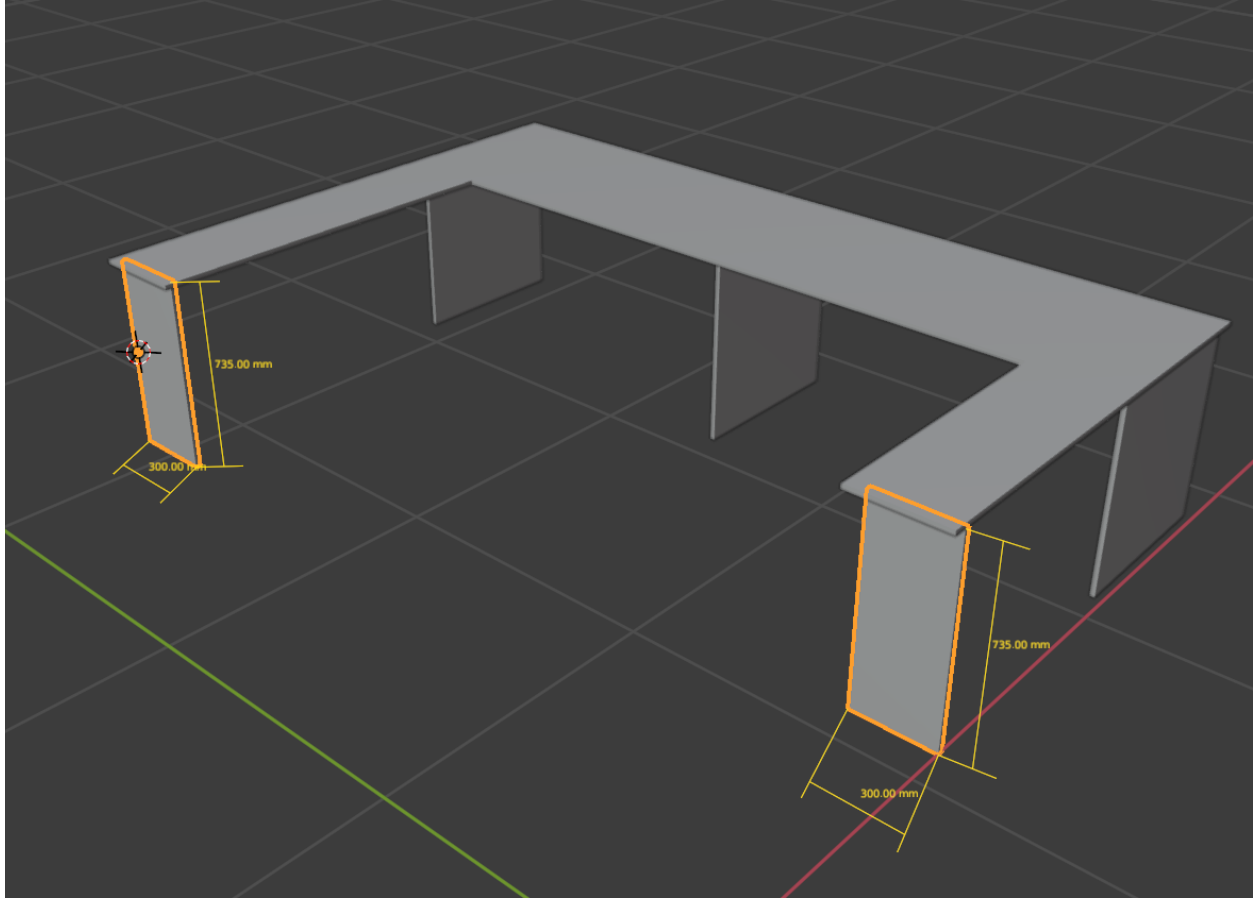


Support Sizes

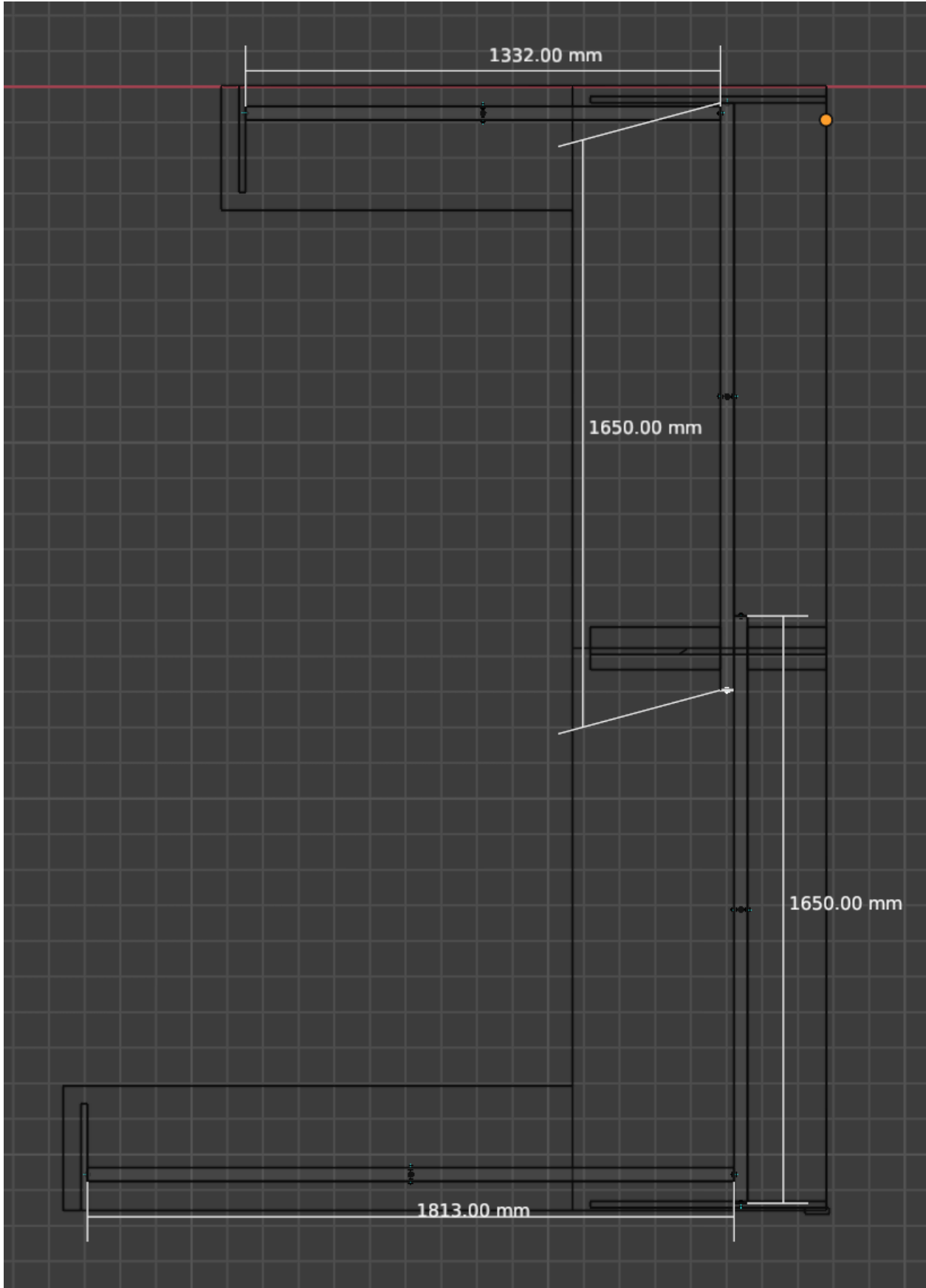
Note: Supports are back from front edges by 50mm



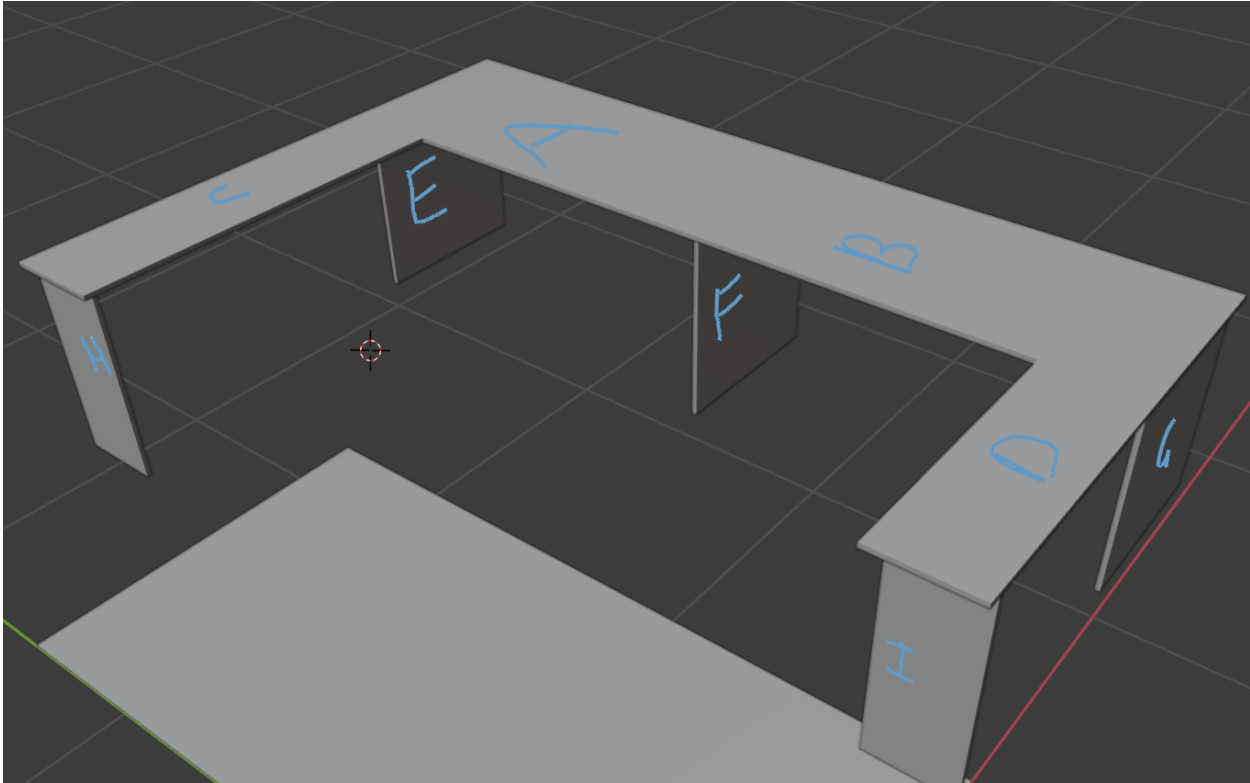
Front Supports

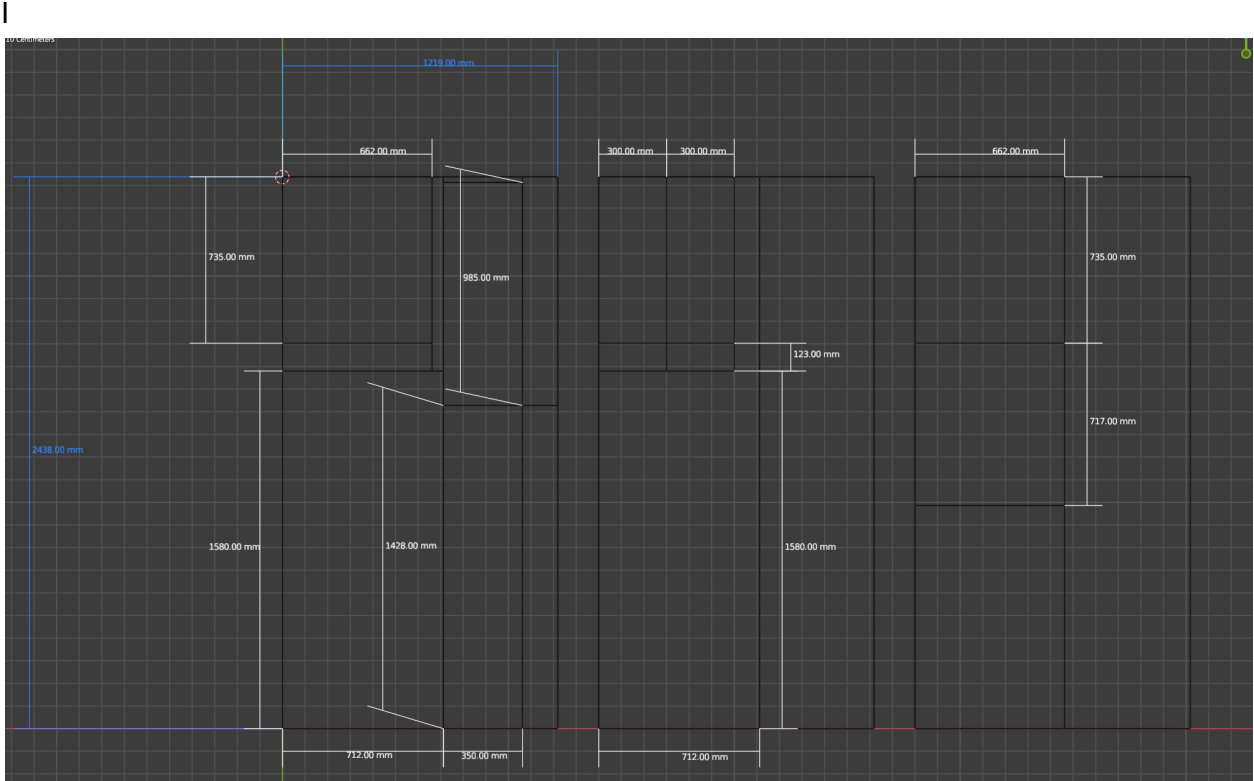
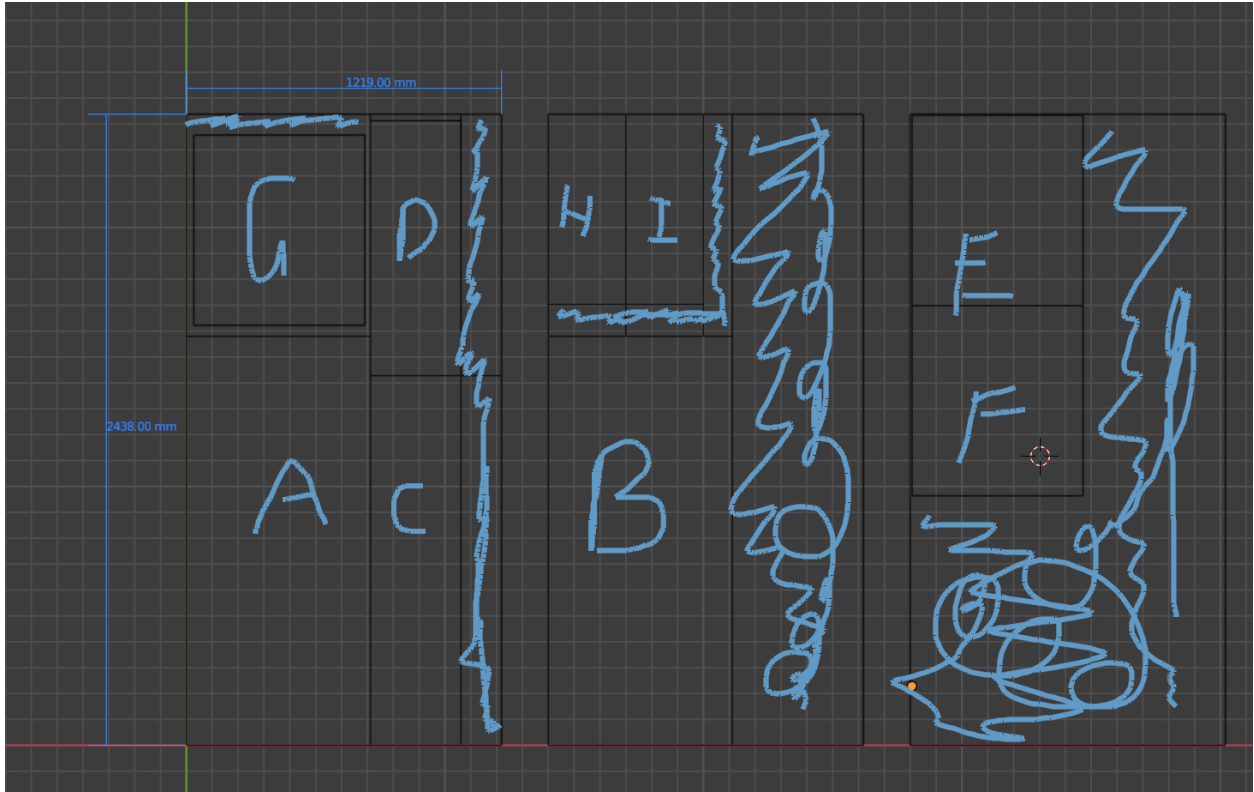


Support Beams (bottom)



Tabletop Cuts





Mockups



